

Base Mounting Support ▶ Open Type · Open Economic Type



①-④ Select the type and parameters in the order for ordering.

■ Open Type

Model(①Code) - ②D_{H7}
KTCCQ - **D10**

■ Open Economic Type

Model(①Code) - ②D_{H7}
KTDCV - **D10**



● Discounted Price

Quantity	1~9	10~
Price	100%	Separate Quotation

Price Excluding Tax (Yen)

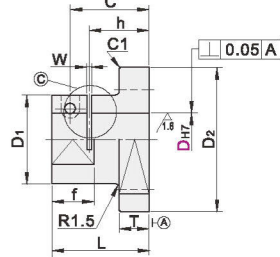
■ Open Type



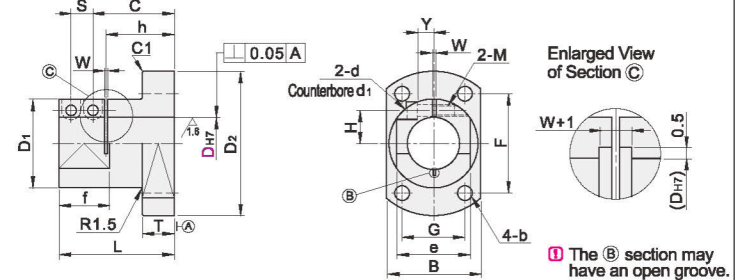
Code	Type	Material		Surface Treatment	Accessory (Screw)
		International	Equivalent		
KTCCQ	Open Type	Q235	SS400	Black Oxide Finish	Hex Socket Head Cap Screw
KTCCR		LD30	A6061	Electroless Nickel Plating	Hex Socket Head Cap Screw (Stainless Steel)
KTCCU		0Cr18Ni9	SUS304	Natural Anodizing	Hex Socket Head Cap Screw (Stainless Steel)
KTCCS		0Cr18Ni9	SUS304	—	Hex Socket Head Cap Screw (Stainless Steel)

① For rust prevention requirements, stainless steel or electroless nickel plated products are preferred.

D=10~16



D=20~50



① The B section may have an open groove.

Code	Model	D _{H7}	D ₂	B	L	T	D ₁	F	G	b	C	S	H	Y	d	d ₁	M	h	f	e	W
KTCCQ KTCCR KTCCU KTCCS	10	+0.015 0	50	33	35	10	30	35	18	4.5	29	—	9	5	4.5	8	M4	22	15	20	22
	12	+0.018 0	52	35	—	—	32	37	20	—	—	—	11.5	—	—	—	—	—	—	—	—
	15	+0.018 0	58	40	39	—	35	40	24	5.5	32	—	12	6	5.5	10	M5	24	17	25	2
	16	+0.021 0	73	45	50	12	40	50	28	6.6	33.8	10.5	14.5	7	6.6	11	M6	34	28	35	—
	20	+0.021 0	93	55	60	—	50	62	36	g	41.5	12	18.5	—	—	—	—	—	—	—	—
	25	+0.021 0	103	65	70	—	60	72	42	g	47	15	21.5	10	—	—	—	—	—	—	—
	30	+0.025 0	108	70	80	15	65	75	45	11	55	17	24.5	—	9	14	M8	44	39	50	—
	35	+0.025 0	118	75	90	—	70	78	55	—	64	17	26.5	13	—	—	—	—	—	—	—
	40	+0.025 0	118	75	90	—	70	78	55	—	64	17	26.5	13	—	—	—	—	—	—	—
	50	+0.025 0	138	90	110	18	85	95	60	14	77.5	21.5	32.5	16	11	17.5	M10	65	48	70	—

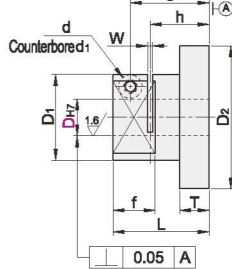
■ Open Economic Type



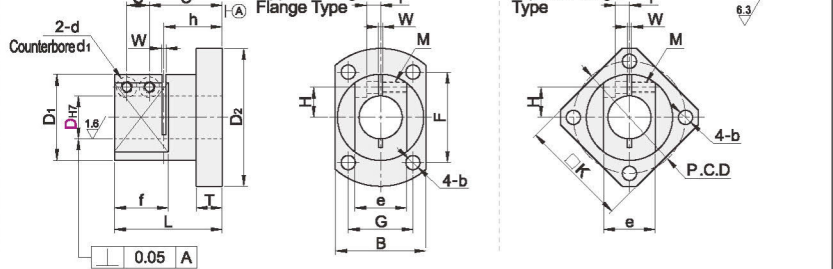
Code	Type	Material		Surface Treatment	Accessory (Screw)
		International	Equivalent		
KTDCV	Opposite Edge Flange Type	45	S45C	Black Oxide Finish	Hex Socket Head Cap Screw
KTDCW		0Cr18Ni9	SUS304	Electroless Nickel Plating	Hex Socket Head Cap Screw (Stainless Steel)
KTDCS	Square Flange Type	45	S45C	Black Oxide Finish	Hex Socket Head Cap Screw
KTEDV		0Cr18Ni9	SUS304	Electroless Nickel Plating	Hex Socket Head Cap Screw (Stainless Steel)
KTEDW		0Cr18Ni9	SUS304	—	Hex Socket Head Cap Screw (Stainless Steel)

① For rust prevention requirements, stainless steel or electroless nickel plated products are preferred.

D=10~15



D=20~50



Code	Model	D _{H7}	D ₂	B	L	T	D ₁	F	G	b	C	S	H	Y	W	d	d ₁	M	h	f	e	K	P.C.D
Opposite Edge Flange Type	10	+0.015 0	45	27	35	10	26	30	18	4.5	29	—	9.5	3	—	4.5	8	M4	22	15	14	35	36
	12	+0.018 0	50	31	—	—	30	34	22	—	—	—	10.5	3.5	—	—	—	—	—	—	—	—	—
	15	+0.018 0	58	37	39	—	35	38	26	5.5	32	—	12.5	4	—	—	—	—	—	—	—	—	—
	20	+0.021 0	64	41	50	12	40	42	30	6.6	33.8	10.5	14	6.5	—	5.5	9.5	M5	24	17	19	44	46
	25	+0.021 0	80	49	60	—	48	54	35	g	41.5	12	17	8	—	6.6	11	M6	34	28	29	62	64
Square Flange Type	30	+0.021 0	90	59	70	—	58	58	45	—	—	—	—	—	—	—	—	—	—	—	—	—	—
	35	+0.025 0	100	65	80	15	64	66	48	—	—	—	—	—	—	—	—	—	—	—	—	—	—
	40	+0.025 0	106	71	90	—	70	70	54	11	55	16	23	—	9	14	M8	44	39	41	76	82	
	45	+0.025 0	112	77	100	—	76	76	60	—	—	—	—	—	—	—	—	—	—	—	—	—	—
	50	+0.025 0	125	87	110	18	85	80	68	14	77.5	21	32	12	—	11	17.5	M10	65	48	58	94	105

① D_{H7} tolerance and perpendicularity are tolerances before opening.

① The recommended tolerances for mating shafts are g6 and f8.