

Square Bracket for Base ▶ Standard Type · Through Hole Type/Threaded Hole Type/Offset Type



Please order according to the diagram

①~② Select the type and parameters in the order for ordering.

■ Through Hole Type/Threaded Hole Type

■ Offset Type

Model (① Code) — (② DH7)
KWAEA — **D10**

Model (① Code) — (② DH7)
KWAGA — **D10**



Discounited Price

Quantity 1-9 10-
 Price 100% Separate Quotation

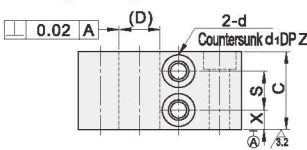
Please Excluding Tax (Vat)



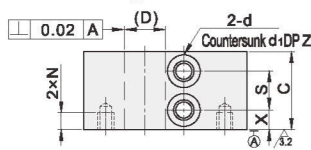
CAD 2D 3D

Code	Type	Material		Surface Treatment	Accessory(Screws)
		International	Equivalent		
KWAEA	Standard Type	Q235	SS400	Black Oxide Finish	Hex Socket Head Cap Screw
KWAEB			SUS304	Electroless Nickel Plating	Hex Socket Head Cap Screw (Stainless Steel)
KWAEF		Q235	SS400	Black Oxide Finish	Hex Socket Head Cap Screw
KWAFB	Threaded Hole Type	Q235	SS400	Electroless Nickel Plating	Hex Socket Head Cap Screw (Stainless Steel)
KWAGA				Black Oxide Finish	Hex Socket Head Cap Screw
KWAGB	Offset Type			Electroless Nickel Plating	Hex Socket Head Cap Screw (Stainless Steel)

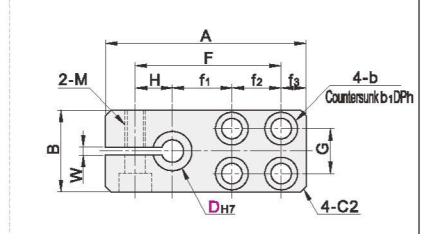
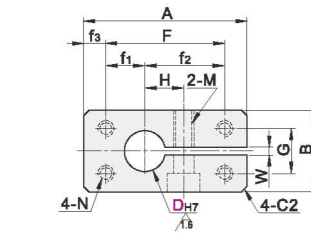
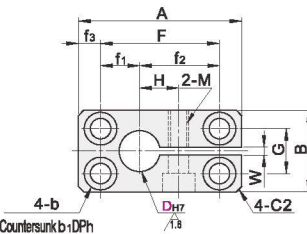
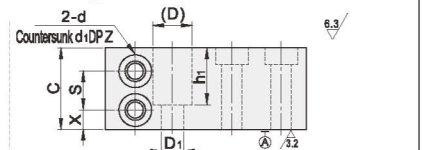
Through Hole Type



Threaded Hole Type



Offset Type



■ Through Hole Type/Threaded Hole Type

Model	Code	DH7	A	B	C	F	f ₁	f ₂	f ₃	G	b	b ₁	h	N	H	M	X	S	d	d ₁	Z	W	
			Through Hole Type	10	+0.015	40	20	19	28	9	19		11	4.5	8	5	M4	9	M4	4.75	9.5	4.5	8
	12	+0.018	42			30	10	20	6														
	15	0	50	22	21	38	14	24		12	5.5	9.2	6	M5	12	M5	5.5	10	5.5	9.5	6	2	
	20		60	30	29	45	17.5	27.5	7.5	16	6.6	11	7	M6	15	M6	7	15	6.6	11	7		
	25	+0.021	65	35	34	50	20	30		20					17			20					
Threaded Hole Type	30		80	45	44	60	22.5	37.5	10	25	9	14	9	M8	21			25					
	35		85	50	49	65	25	40		30					24	M8	9.5	30	9	14	9		
	40	+0.025	100	60	59	75	30	45	12.5	35	11	17.5	11	M10	26		12	35				3	
	50		110	70	69	85	32.5	52.5		45					33	M10	14.5	40	11	17.5	11		

■ Offset Type

Model	Code	DH7	A	B	C	F	f ₁	f ₂	f ₃	G	b	b ₁	h	H	M	X	S	d	d ₁	Z	W	D ₁	h ₁
			Offset Type	10	+0.015	45	20	19	33	14	10	6	10	5	8	4.6	9	M4	4.75	9.5	5	8	4.6
	12	+0.018	48			36	16							10								8	
	15	0	58	22	21	44	20	12	7	12	6	9.5	5.5	12	M5	5.5	10	6	9.5	5.5	2	11	16
	20		71	30	29	56	25	16		16	7	11	6.5	15	M6	7	15	7	11	6.5		16	24
	25	+0.021	82	35	34	67	20	20	7.5	20	7			17								21	29
	30	0	94	45	44	76	30	25		25	9	14	9	21								26	39
	35		105	50	49	87	35	28		28				24	M8	9.5	30	9	14	9		31	44
	40	+0.025	116	60	59	96	40	30		30	11	17.5	11	26		12	35				3	36	54
	50		152	70	69	129	58	38		38				33	M10	14.5	40	11	17.5	11		46	64