

# Square Bracket for Base ▶ Square Hole Type · Standard Type/Side Mount Type



①~② Select the type and parameters in the order for ordering.

■ Standard Type

Model(①Code) —  $\text{D}_{D8}$   
**KWALA** — **D10**

■ Side Mount Type

Model(①Code) —  $\text{D}_{D8}$   
**KWAMA** — **D10**

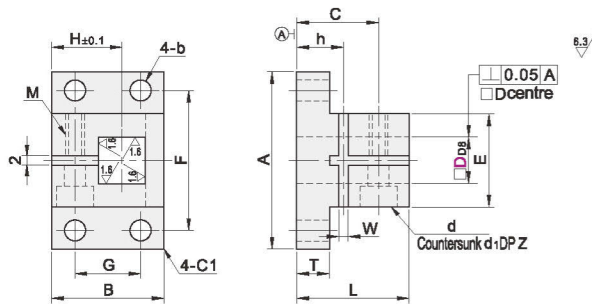


Discounted Price	Quantity	1~9	10~
	Price	100%	Separate Quotation

## ■ Standard Type

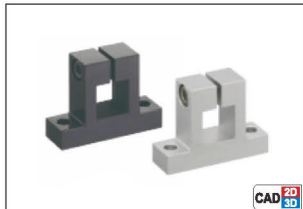


Code	Type	Material		Surface Treatment	Accessory
		International	Equivalent		
KWALA	Square Hole Type Standard Type	Q235	SS400	Black Oxide Finish	Hex Socket Head Cap Screw 1
KWALB		LD30	A6061	Electroless Nickel Plating	Hex Socket Head Cap Screw (Stainless Steel) 1
KWALC				Black Anodizing	Hex Socket Head Cap Screw 1
KWALD		0Cr18Ni9	SUS304	Natural Anodizing	Hex Socket Head Cap Screw (Stainless Steel) 1
KWALE				—	

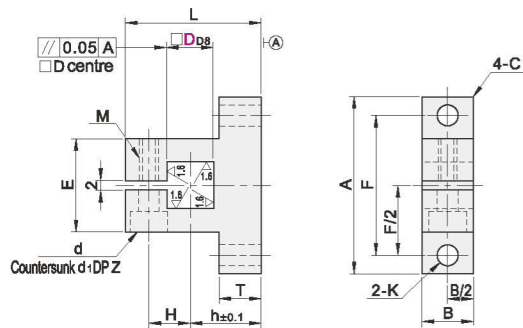


Model		A	B	L	T	E	F	G	b	C	H	d	d <sub>1</sub>	Z	M	h	W
Code	D <sub>D8</sub>																
KWALA KWALB KWALC KWALD KWALE	10	38	24	24	7	20	30	14	4.5	17.5	15	4.5	8	5	M4	10	1.5
	12										16						
	15	48	32	36	9	26	38	20	5.5	24	19	5.5	9.5	6	M5	12	
	20	52	36	40	10	30	42	24	6.5	26.5	21	5.5	9.5	6	M5	13	2
	25	62	45	48	12	35	48	28	6.5	32	28	6.5	11	7	M6	15	

## ■ Side Mount Type



Code	Type	Material		Surface Treatment	Accessory
		International	Equivalent		
KWAMA	Square Hole Type Side Mount Type	Q235	SS400	Black Oxide Finish	Hex Socket Head Cap Screw 1
KWAMB		LD30	A6061	Electroless Nickel Plating	Hex Socket Head Cap Screw (Stainless Steel) 1
KWAMC				Black Anodizing	Hex Socket Head Cap Screw 1
KWAMD		0Cr18Ni9	SUS304	Natural Anodizing	Hex Socket Head Cap Screw (Stainless Steel) 1
KWAME				—	



Model		A	B	L	T	F	K	h	H	E	d	d <sub>1</sub>	Z	M
Code	D <sub>D8</sub>													
KWAMA KWAMB KWAMC KWAMD KWAME	10	38	11	29	7	30	4.5	14	10	20	4.5	8	5	M4
	12			30					11					
	15	48	15	36	9	38	5.5	18	13	26	5.5	9.5	6	M5
	20	52	20	40	10.5	42	6.5	19	16	30	6.5	11	7	M6
	25	73	24	54	12	48	6.5	25	20	35	6.5	11	7	M6