

# Mounted Bearing ▶ Double bearing compact T type With retainer



Please order according to the diagram

①~④ Select the type and parameters in the order of for ordering

Model(①Code) — ② Bearing Model — ③ Seal ring — ④ h — NA/KC/KK

YCGCO — 6000 — DD — h30 — KC

Optional Processing



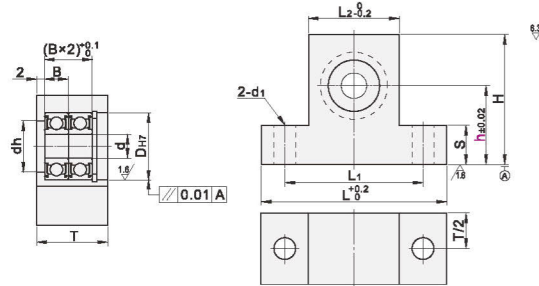
Discounted Price  
Quantity 1~9 10~  
Price 100% Separate Quotation  
Price Excluding Tax(\*Tax)



CAD 2D/3D

Code	Type	Material			Surface Treatment
		Bearing	Bearing Housing	Retaining Ring	Bearing Housing
YCGCO	Double bearing compact T type	Steel	S45C	Spring steel	Black Oxide Finish
YCGCP		Stainless Steel	SUS304	SUS304	Electroless Nickel Plating
YCGCQ					

■ Bearing accuracy: GB/T 307.10 Grade, Equivalent to JIS B 15140 Grade.



## Double bearing compact T type

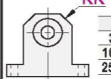
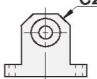
Code	Model		h Selection	d	D <sub>H7</sub>		dh	B	H	L	L <sub>1</sub>	L <sub>2</sub>	T	S	d <sub>1</sub>	
	Bearing Model	Seal Rings														
YCGCO	605	ZZ (Double-lid type)	10 15 20 25	5	14	+0.018 0	10	5	h+10.8	40	30	20	15	4.8	4.3	
	606		6	17	13		6	h+12.8	47	35	23	18				
	608		8	22	18	7	h+14.8	53	41	29	19	9.8	5.3			
	6900		10	26	19	6	h+16.8	58	46	34	23					
	6000		※VV (Non-contact rubber seal ring)	20 30 40	12	24	+0.021 0	21	6	h+15.8	56	44	32	18	14.8	6.3
	6901			12	28	24		6	h+17.8	60	48	36	19			
6902	15	32		25	7	h+19.8	68	54	40	24						
6002	DD (Contact rubber seal ring)	25 30 40 50		17	30	+0.021 0	27	7	h+18.8	64	52	38	20	19.8	9	
6903		17		35	31		10	h+21.8	70	56	43	26				
6003		20		37	34	9	h+22.8	73	59	45	24					
6904		20	42	36	12	h+24.8	82	66	50	31						
6004		25	47	41	12	h+27.8	96	76	56	31						
6005		30	55	48	13	h+31.8	104	84	64	32	19.8	11				
6006	35 40 50 80															

※ VV(Non-contact rubber seal ring) is not applicable to bearings of model 605,606.

※ VV(Non-contact rubber seal ring),DD(Contact rubber seal ring), bearing material: steel.

ⓘ Please note to avoid the retainer ring, refer to the retainer ring size for referenceP851.

Optional Processing

Code	Increase chamfering on both sides	Increase chamfering C2	Do not assemble the bearing,retainer ring
	KK	KC	NA
Technical Specification	Selection Method KK  d KK 3~8 5 10~20 10 25~30 12	Selection Method KC  C2	Selection Method Not assembled with bearings and retainers (shipped separately)