

Square Pull Handles ▶ Chamfered Corner with Cover Type / Right-angled Corner with Cover Type

External Mount Type



Please order according to the diagram

①~② Select the type and parameters in the order of for ordering.

① Chamfered Corner with Cover Type

Model(①Code) - ②L

CCBGF - L120

① Right-angled Corner with Cover Type

Model(①Code) - ②L

CCEJA - L100



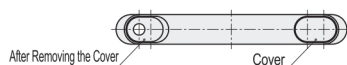
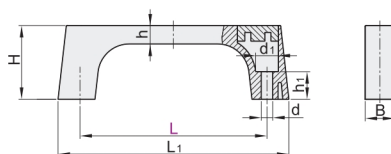
Price Excluding Tax (Yuan)

| Quantity | 1~9 | 10~ |
|----------|------|--------------------|
| Price | 100% | Separate Quotation |

① Chamfered Corner with Cover Type



CAD 2D/3D



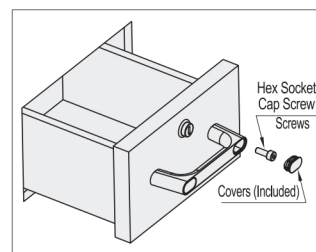
| Code | Type | Material | Surface Treatment | Accessory |
|------|------|----------|-------------------|-----------|
|------|------|----------|-------------------|-----------|

CCBGF Chamfered Corner with Cover Type ZDC Chrome Plating Comes with 2 Covers

① Features:

- It can be fixed with screws on the surface.
- The surface of the pull handle features a stylish flat finish, while the inside is designed with an easy-to-grip circular shape.
- Screws are concealed by the covers.
- The covers are difficult to remove, preventing tampering.

Example

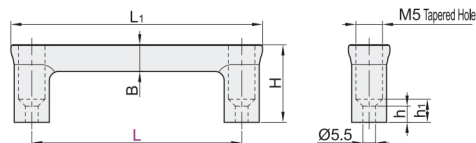


| Model | | L ₁ | d | d ₁ | h ₁ | H | B | h | Reference Weight (kg/pcs) |
|-------|-----|----------------|-----|----------------|----------------|----|----|----|---------------------------|
| Code | L | | | | | | | | |
| CCBGF | 100 | 125 | | | | | | | 0.16 |
| | 120 | 145 | 6.2 | 12.3 | 15 | 40 | 16 | 10 | 0.18 |
| | 150 | 175 | | | | | | | 0.20 |

① Right-angled Corner with Cover Type



CAD 2D/3D



| Code | Type | Pull Handle | | Cover | |
|------|------|-------------|-------------------|----------|-------|
| | | Material | Surface Treatment | Material | Color |

CCEJA Right-angled Corner with Cover Type ADC12 Baking Finish ABS White

CCEJC SUS304 Mirror Polishing

| Model | | L ₁ | H | h | h ₁ | A | B | Reference Weight (kg/pcs) |
|----------------|-----|----------------|------|---|----------------|----|------|---------------------------|
| Code | L | | | | | | | |
| CCEJA CCEJC | 100 | 118 | 33.5 | 7 | 10 | 18 | 11.5 | 0.06 |