

Concealed Pull Handle ▶ Standard Type • Through-hole Fixation / Internal Thread Fixation Internal Mount Type



Please order according to the diagram

①~② Select the type and parameters in the order of for ordering.

Model(①Code) - ②A
CCMCE - A110



Discounted Price

Quantity 1~9 10~
Price 100% Separate Quotation

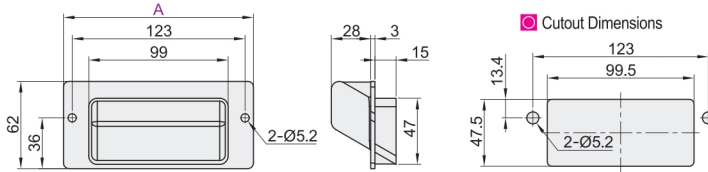
Price Excluding Tax (Yuan)



CAD 2D/3D

Code	Type	Mounting Hole	Material	Surface Treatment/Color
CCMCA	Standard Type	2 Through-hole	PP	Black
CCMCC		2 Internal Thread	ABS	
CCMCE			ZDC+ABS	Chrome Plating

CCMCA



Cutout Dimensions

Features:

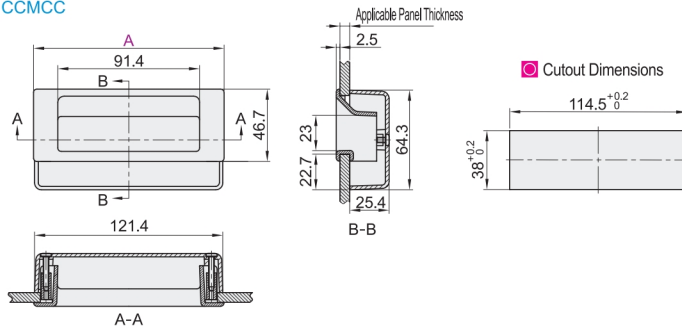
- It can be installed with screws from the inside. The pull handle and screws do not protrude from the surface, ensuring a clean and tidy appearance.
- The finger grip section is tilted upwards, making it difficult for fingers to slip off.

Applications:

- Amusement equipment, PA (portable audio equipment), furniture, etc.

Model		Applicable Panel Thickness	Reference Weight (kg/pcs)	Recommended Screws Phillips Flat Head Self-tapping Screw
Code	A			
CCMCA	135	15	0.044	M4×12

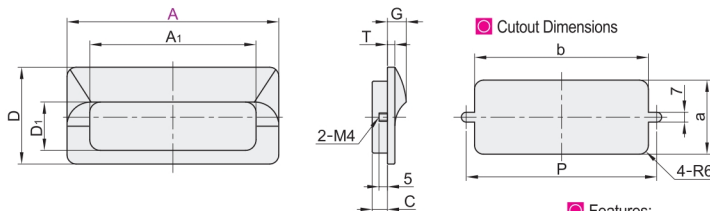
CCMCC



Cutout Dimensions

Model		Applicable Panel Thickness	Reference Weight (kg/pcs)
Code	A		
CCMCC	123	1.0 ~ 1.8	0.04
	123A	1.8 ~ 3.3	
	123B	3.3 ~ 4.8	
	123C	4.8 ~ 6.3	

CCMCE



Cutout Dimensions

Features:

- Space-saving assembly, aesthetically pleasing, and convenient to push and pull.

Applications:

- Industrial automation equipment, aviation, high-speed rail, marine, communication equipment, electrical cabinets, boxes, and related equipment.

Model		A ₁	D	D ₁	C	G	T	Cutout Dimensions			Reference Weight (kg/pcs)
Code	A							P	a	b	
CCMCE	110	82	50	23	7.5	12.5	5	96	36	90	0.15
	140	108	64	32				126	48	116	0.22