

# Butterfly Nut / Quick Release Nut



Please order according to the diagram

1~2 Select the-Type and parameters in the order of for ordering

Model(1Code) - (2M)  
UQFCO - M4



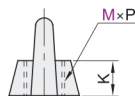
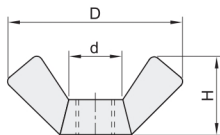
Discounted Price  
Quantity 1~9 10~  
Price 100% Separate Quotation

Price Excluding Tax (Yuan)

## Butterfly Nut



CAD 2D 3D



Applicable Standards for This Product : DIN314-1999

Code	Type	Material		Surface Treatment
		International	Equivalent	
UQFCO	Butterfly Nut	Carbon Steel		Zinc Plated
UQFCP		0Cr18Ni9	SUS304	

Model		Thread pitch P	d (min)	K (min)	D (min)	H (min)
Code	M					
UQFCO UQFCP	4	0.7	5.5	3.2	21	11
	5	0.8	7.5	4.0	21	11
	6	1.0	9	5.0	27	13
	8	1.25	10.5	6.5	31	16
	10	1.5	14	8	36	18
	12	1.75	17	10	48	23



Please order according to the diagram

1~2 Select the-Type and parameters in the order of for ordering

Model(1Code) - (2D)  
UQGDO - D24



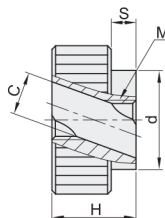
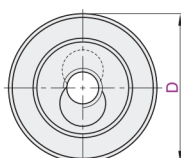
Discounted Price  
Quantity 1~9 10~  
Price 100% Separate Quotation

Price Excluding Tax (Yuan)

## Quick Release Nut



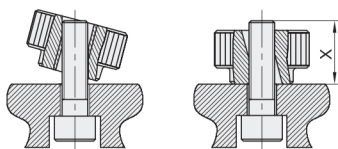
CAD 2D 3D



Code	Type	Material	Surface Treatment
UQGDO	Quick Release Nut	SUM22L	Black Oxide Finish
UQGDP		SUS303	—

Model		M	H	S	d	C	Refer to tightening torque N/m
Code	D						
UQGDO UQGDP	24	M6	14	4	16	6.7	4.8
	30	M8	17	5	20	8.7	9
	36	M10	20	6	28	11	17.5
	40	M12	24	8	32	13.7	

## Example



### Features and Usage Instructions:

Please use within the range of the threaded tightening torque;  
For rapid locking of long threads;  
The nut is threaded through the screw via a straight hole, moved to the locking position, and then the nut is flattened and tightened against the screw;  
Ensure that the screw locking length (X) is greater than the nut length (H).