

# Handle Lock ▶ L-shaped Handle • Lip Height 31

## Single Point Lock



Please order according to the diagram

1 Select the type and parameters in the order of for ordering.

Model (Code)

CAROA



Price Excluding Tax (¥/unit)

Discounted Price

Quantity	1~9	10~
Price	100%	Separate Quotation

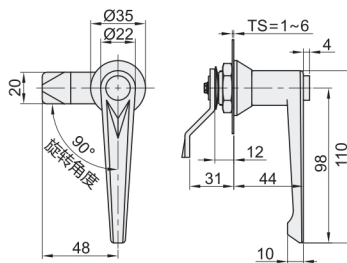


CAD 2D

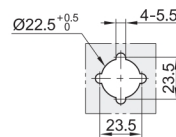
Code	Type	Lip Height	Lock Cylinder	Material			Surface Treatment		
				Base	Handle	Deadbolt	Base	Handle	Deadbolt
CARBF	L-shaped Handle	31	Lockless	ZDC5	ZDC5	S45C	Chrome Plating		Blue-White Zinc Plating
CAROA			With Lock Cylinder	ZDC	Q235		Chrome Plating		Zinc Plated

For Lockless . Lip Height : 31

CARBF



Cutout Dimensions



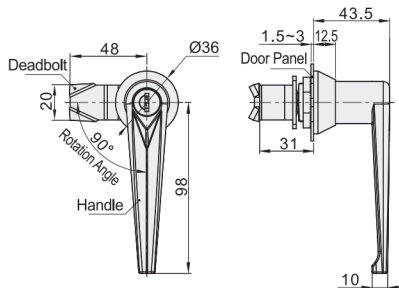
Features:

- The handle rotates 90° to achieve the opening or locking function.
- Universal for both left-handed and right-handed door openings.

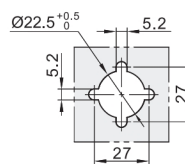
Deadbolt Hole Dimensions: □ 8 × 8

For Lock Cylinder: Lip Height : 31

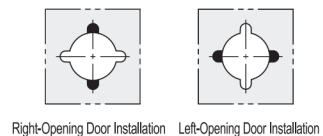
CAROA



Cutout Dimensions



Installation Orientation



Features:

- The handle rotates 90° to achieve the opening or locking function.
- Capable of left-handed and right-handed opening.

Deadbolt Hole Dimensions: □ 8 × 8

Comes with 2 keys.

The shaded areas indicate the positioning state of the base and mounting holes on the door panel. The vertically aligned handle rotates right to open, while the horizontally aligned handle rotates left to open.

Features:

- The handle rotates 90° to achieve the opening or locking function.
- Capable of left-handed and right-handed opening.
- IP Protection Rating: IP54

Deadbolt Hole Dimensions: □ 8 × 8

Comes with 2 keys.

Code	Reference Weight(kg)
CARBF	0.141
CAROA	0.224