

# Thin-type Waterproof Flat Lock ▶ Press-to-Rotate Handle



Please order according to the diagram

①~② Select the type and parameters in the order of for ordering.

Model(①Code) — ②A  
CAXEA — A88



Discounted Price

Quantity 1~9 10~  
Price 100% Separate Quotation

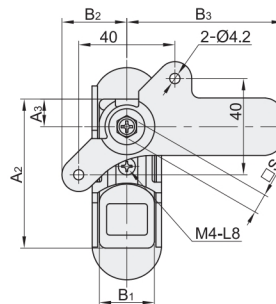
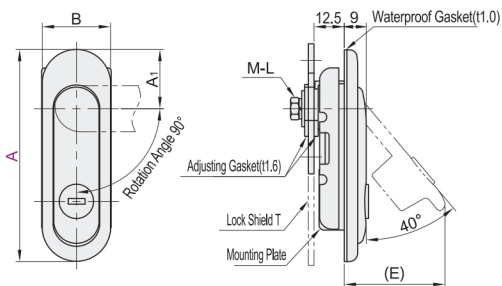
Price Excluding Tax (¥/unit)



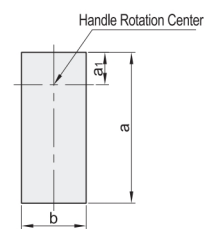
CAD 2D

Code	Type	Material	Surface Treatment
CAXEA	Press-to	With Lock Cylinder	ZDC
CAXEB	Rotate Handle	Lock Cylinder	Satin Chrome Plating

A : 88

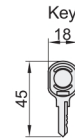
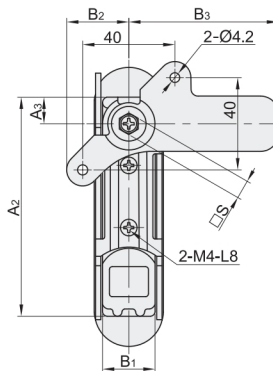
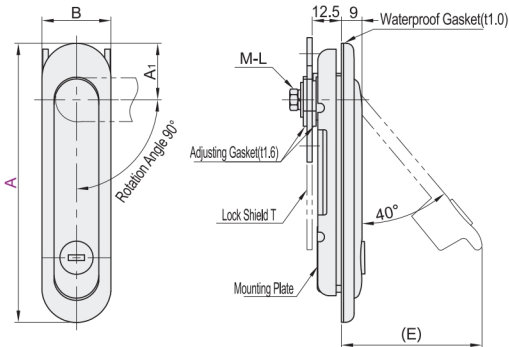


✿ Cutout Dimensions



● Applicable Door Panel Thickness 1.2~2.3mm

A : 121/147



✿ Features:

- Design featuring automatic pop-up of lock cylinder handle upon pressing.
- Ultra-thin design (distance from mounting surface to shield is only 12.5mm).
- Equipped with highly waterproof rubber gasket within the recessed area at the back of the lock body.
- Ability to change the handle rotation direction by adjusting the back gasket and shield orientation.

✿ Application: High and low-voltage transformer boxes, distribution boxes, switchboards, control cabinets, and various other cabinets and enclosures.

⚠ Note: To prevent loosening, it is recommended to apply anti-slip agent when installing the screws for the shield of this product.

⚠ Deadbolt Hole Dimensions : (A: 88/121) □ 8×8 (A: 147) □ 10×10

⚠ Lock Cylinder Model Includes: 2 Keys.

Model		A <sub>1</sub>	A <sub>2</sub>	A <sub>3</sub>	B	B <sub>1</sub>	B <sub>2</sub>	B <sub>3</sub>	E
Code	A								
	88	24.5	62	11.5	28.5	23	27	65	41.8
	121		95		30				61.1
CAXEA	147	28.5	116	13	33	26	27.1	72	73.6

Model		T	M-L	S	Cutout Dimensions			Reference Weight (kg)
Code	A				a	a <sub>1</sub>	b	
	88	2.3	M5-L10	8	63	12	24	0.21
	121				96			0.27
CAXEA	147	3.2	M6-L12	10	117	13.5	27	0.36