

Drag Chain ▶ Reinforced Bridge-type Drag Chain, Double-side Opening 80 Series



Please order according to the diagram

①~④ Select the type and parameters in the order of for ordering.

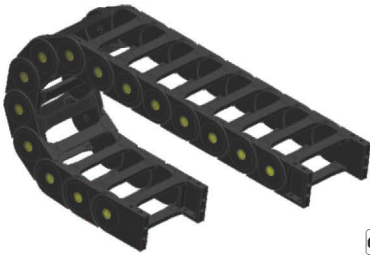
① Model
Code Internal Height H1 — Internal Width B1 — Bending Radius R — Number sections
EXBPQ-80 — 100 — R200 — 16

Joint (Single Joint Model for Separate Purchase)

Model
EXBPQ-80-75C



Discounted Price
Quantity 1-9 10-
Price 100% Separate Quotation
Price Excluding Tax (Yen)

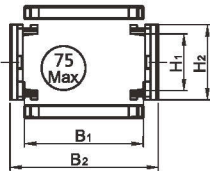
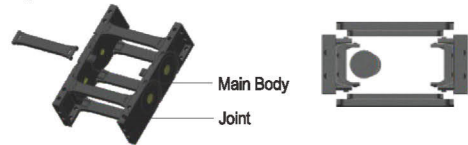


CAD 2D 3D

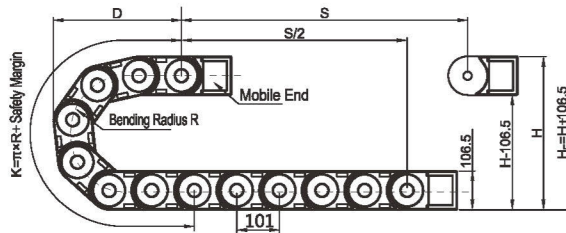
Code	Type	How to open	Material	Color	Allowable Temperature	Accessories
EXBPQ	Colorful Bridge-type	Internal Opening	PA6+GF30	Black	-20°C~120°C	Joint

- ⚠ Number of Links per Meter=1000+Pitch
- ⚠ Drag Chain Joints Sold as a Complete Set(Mobile End+Fixed End)

Schematic Diagram



Suitable for Cables with a Diameter Below 75mm



Pitch=101mm, Number of Links per Meter=10, Chain Length=S/2+K, S=Stroke Distance, K=π x R+*Safety Margin*
Actual Installation Height: H=H+106.5mm (Load 2.2kg/m)

R	H	D	K
150	406.5	352	673
200	506.5	402	830
250	606.5	452	987
300	706.5	502	1144

Model		Internal Width B1	Bending Radius R	Style	External Height H2	External Width B2	Fixed Joint Type and Parameters								
Code	Internal Height H1						Aperture	Hole Spacing					F	Joint Model	
		A	B	C	D	E									
EXBPQ	80	100	R200 R250 R300	(Internal Opening)	106.5	144	9	35	122	126	65	20	144	EXBPQ-80-100C	
		150							172				194	EXBPQ-80-150C	
		175							197				219	219	EXBPQ-80-175C
		200							222				244	244	EXBPQ-80-200C
		250							272				294	294	EXBPQ-80-250C

Fixed Joint Type and Parameters (see table above)

