

Plastic Chain Conveyor ▶ Double-Row Type

Head-Driven 3-Groove Profile (Chain Wheel Diameter 57mm)



Please order according to the diagram

1~4 Select the type and parameters in the order of for ordering.

1 Model Code B
 2 L (Minimum Unit 5) 300~3000
 3 Motor Selection Output Power (W) Voltage (V) Specifications Gear Head Ratio Belt Specification
 4 Motor Brand Selection T: Taiwanese Brand/S: Panasonic Motor
 Optional Processing MA() MB()

RLCAO-B100 - L1500 - 25 - TA220 - SCM - 15 - A - T - MA

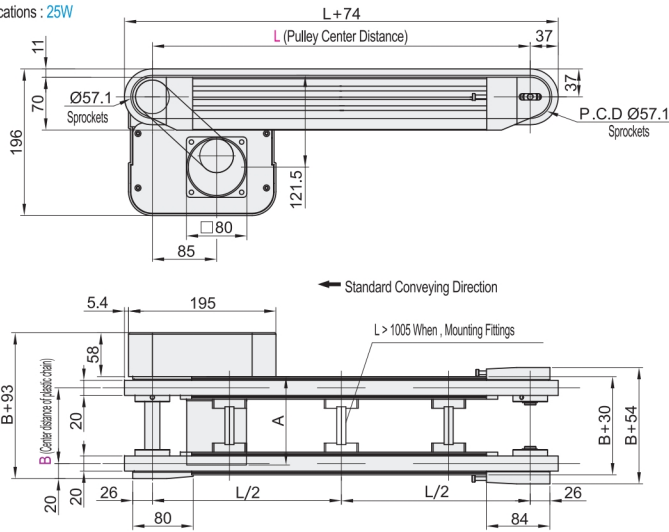


CAD 2D/3D

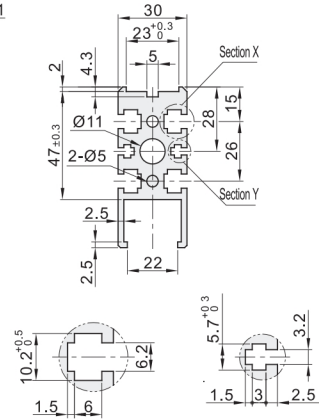
Code	Type	Material				Surface Treatment			
		Profile	Motor Bearing Cover	Pulley Mounting Bracket	Plastic Chain	Profile	Motor Bearing Cover	Pulley Mounting Bracket	Plastic Chain
RLCAO	Double-Row Type	Aluminum	SPCC	Aluminum	Polyacetal	Anodized Finish	Painting	Natural Anodizin	—

❗ Specialty: Another model boasts two rows of conveying surfaces, enabling the installation of blocks and sensors between the belts. Utilizes plastic chains that are damage-resistant and easy to maintain.

Motor Specifications : 25W



Profile Cross-Section Enlarged View



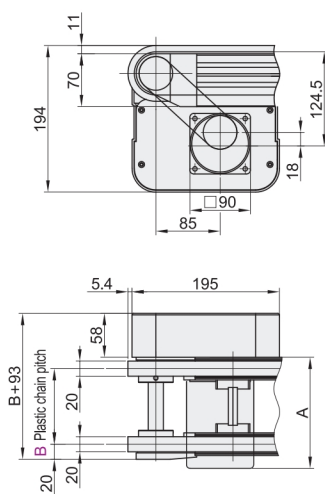
Enlarged View of Section X : 1 (for M6) Enlarged View of Section Y : 1 (for M3)

※ When L ≤ 1000, 4 nuts are pre-installed in each groove. When L > 1000, 6 nuts are pre-installed in each groove. If more nuts need to be pre-embedded, please specify via additional options.

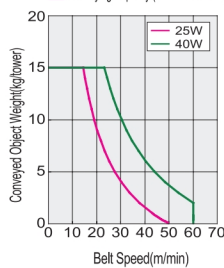
❗ The plastic chains and sprockets are of the 40 series.

❗ Suitable for use with GB/T 6170 standard hexagon nuts.

Motor Specifications : 40W



❗ Conveying Capacity (Reference Value)



❗ Gear Head Reduction Ratio

Gear Head Reduction Ratio	Belt Speed(m/min)	
	50Hz	60Hz
5	47.9	57.5
7.5	31.9	38.3
9	26.6	31.9
12.5	19.1	22.9
15	15.9	19.1
18	13.3	15.9
25	9.5	11.4
30	7.9	9.5
36	6.6	8.0
50	4.7	5.7
60	4.0	4.8
75	3.2	3.8
90	2.6	3.2
100	2.4	2.8
120	2.0	2.4
150	1.6	1.9
180	1.3	1.6

❗ Conveying capacity may decrease depending on the load conditions.
❗ Conveyor Speed Table Reference Based on Panasonic Motor (1400 RPM) and Taiwanese Motor (1300 RPM).

❗ A Dimension Table

Output Power (W)	Motor Type		Reduction Ratio	A
	Specifications	Manufacturer		
25W	Three-phase motor	Taiwan	5~18	117
			20~180	128.5
	Speed-Controlled Motor	Taiwan	5~18	128
			20~180	138.5
	Three-phase motor	Panasonic	5~18	115
			20~180	125
Speed-Controlled Motor	Panasonic	5~18	125	
		20~180	147	
40W	Three-phase motor	Taiwan	5~18	147
			20~180	165
	Speed-Controlled Motor	Taiwan	5~18	157
			20~180	175
	Three-phase motor	Panasonic	5~18	142
			20~180	152
Speed-Controlled Motor	Panasonic	5~180	142	
		5~180	152	

Plastic Chain Conveyor ▶ Double-Row Type

Head-Driven 3-Groove Profile (Chain Wheel Diameter 57mm)

Model		L Minimum Unit 5	Motor Selection					Motor Brand Selection
Code	B Minimum Unit 10		Output Power (W)	Voltage (V)	Specifications	Gear Head Ratio	Belt Specification	
RLCAO	80~300	300~3000	25	TA100 (Single-Phase)	SCM Speed-Controlled Motor	5 7.5 9 12.5 15 18 25 30 36 50 60 75	A Generally used	T (Taiwanese Brand) S (Panasonic Motor)
				TA220 (Single-Phase)				
			40	SA200 (Three-phase)	INV Inverter	90 100 120 150 180	J Beltless	W Motorless with Gear Head
				NV Motorless	NM Motorless			

① When selecting "Motorless, No Gear Head," the spacing of motor mounting holes will vary depending on the motor output power.

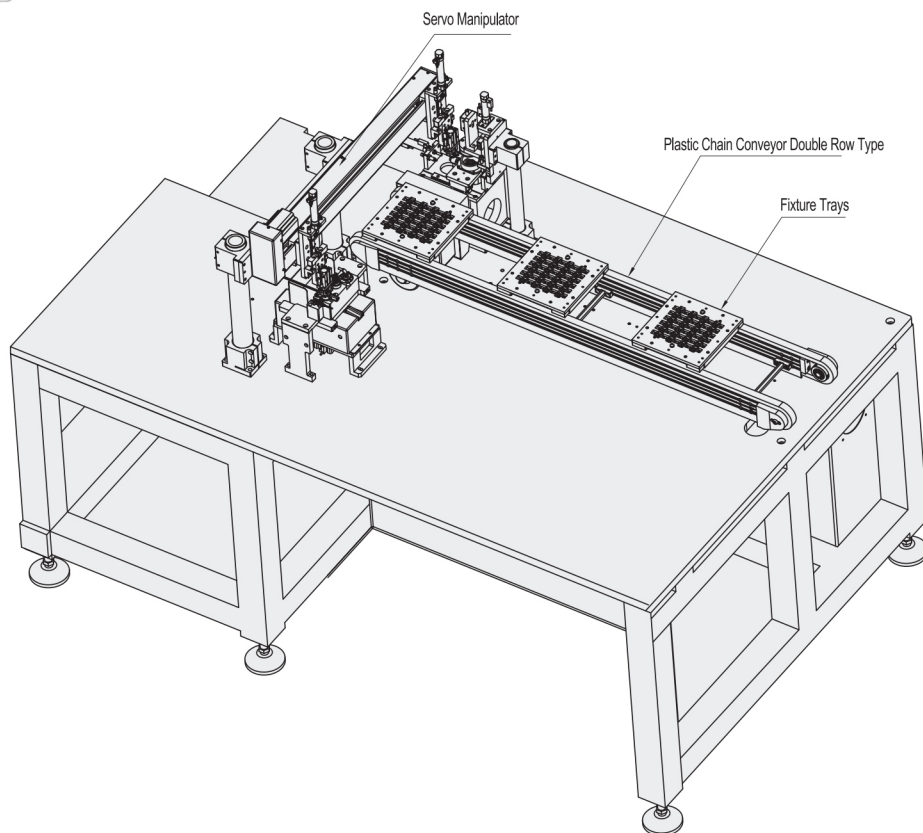
② When selecting "Motorless, No Gear Head," the main unit will be delivered in a component state.

Optional Processing

Code	MA	
Technical Specification	Reverse Motor Mounting Position	
		Selection Method MA FA indicates motor installation on the left side FB indicates motor installation on the right side.

Code	MB ()	
Technical Specification	Post-Installed Nuts Included	
		Selection Method MB3M6 ① Please specify the number of post-installed nuts included. For example: MB3 indicates 3 nuts per groove. M6 indicates the thread size; M6 is the default but M3/M4/M5 are optional.

Example



① This double-row plastic chain conveyor for fixture unloading features low friction, durability, ease of maintenance, and minimal noise.