

# Flange-type oil-free bushing assembly ▶ Extended Type

With built-in copper alloy bushing



Please order according to the diagram

1~2 Select the type and parameters in the order of for ordering

Model (1)Code — (2)d  
**GYFVW** — **d6**

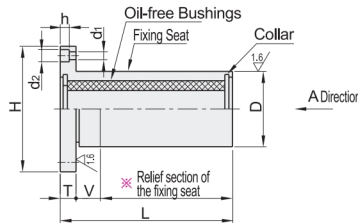


Quantity	1~9	10~
Price	100%	Separate Quotation

Price Excluding Tax (Yuan)



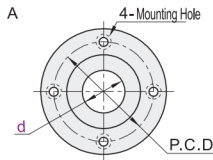
Code	Type	Fixing Seat		Bushing Material	Seal ring
		Material	Surface Treatment		
<b>GYFVW</b>	Round Flange Type			High-strength Brass (SP2) Embedded with Solid Lubricant	Absent
<b>GYFVX</b>	Extended Type	SS400	Electroless Nickel Plating		Present
<b>GYFUY</b>					Square Flange Type
<b>GYFUZ</b>	Opposite Edge Flange Type				Present
<b>GYFTA</b>					Absent
<b>GYFTB</b>					Present



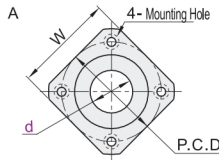
※ Tolerance for the relief section of the fixing seat

D ≤ 28 When  $-0.1$   
 $-0.3$   
 D ≥ 32 When  $-0.5$

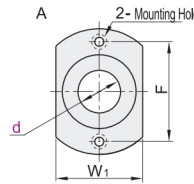
Round Flange Type



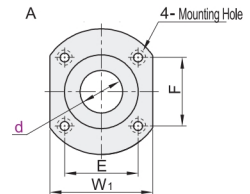
Square Flange Type



Opposite Edge Flange Type  
 d=6~13



d=16~30



Model		D	L	V	H	T	d <sub>1</sub>	d <sub>2</sub>	h	P.C.D	W	W <sub>1</sub>	E	F	
Round Flange Type <b>GYFVW</b> <b>GYFVX</b>	<b>6</b>	$+0.022$ 0	12	$0$ $-0.018$	37	28	5	3.3	6	3.3	20	22	17	20	
	<b>8</b>	$+0.028$ 0	15		47	6	32				24	25	20	24	
	<b>10</b>		19				40				29	30	24	29	
	<b>12</b>		21	$0$ $-0.021$	57		42	6	4.3	7.5	4.3	32	32	26	32
Square Flange Type <b>GYFUY</b> <b>GYFUZ</b>	<b>13</b>	$+0.034$ 0	23				43				33	34	28	33	
	<b>16</b>		28		67	11	48				38	37	33	22	31
	<b>20</b>		32		77		54				43	42	37	24	36
	<b>25</b>	$+0.041$ 0	40	$0$ $-0.025$	108		62	8	5.3	9	5.3	51	50	45	32
Opposite Edge Flange Type <b>GYFTA</b> <b>GYFTB</b>	<b>30</b>		45		128		74				60	58	50	35	49
	<b>35</b>		52		128		82	10	6.3	11	6.3	67	64		
	<b>40</b>	$+0.050$ 0	60	$0$ $-0.030$	150	16	96	13	8.5	14	8.3	78	75		
	<b>50</b>		80		170		116				98	92			