

Rotary Shaft ▶ Internal Thread on Both Ends-Standard Type

Straight Rod Type



①~④ Select the type and parameters in the order of for ordering
 g6
 Model(①Code) — ②D — ③L — ④M.N — LC LA()...
NAJAH — D4 — L200 — M2-N2 — LC

Discounted Price
 Quantity 1-9 10-
 Price 100% Separate Quotation
 Price Containing Tax (TAX)

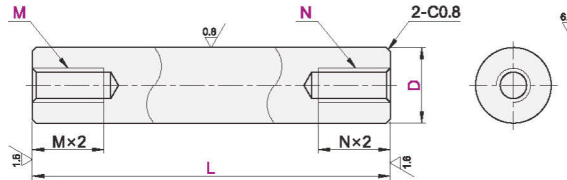


CAD 3D

D	g6	h7	h9
4~6	-0.004 -0.012	0 -0.012	0 -0.030
8-10	-0.005 -0.014	0 -0.015	0 -0.038
12~18	-0.008 -0.017	0 -0.018	0 -0.043
20~30	-0.007 -0.020	0 -0.021	0 -0.052
35~50	-0.009 -0.025	0 -0.025	0 -0.062

① For roundness, straightness, perpendicularity, and coaxiality, please refer to the rotary shaft product overview.

Code	Type	D Tolerance	Material		Surface Treatment
			International	Equivalent	
NAJAH NAJAJ NAJAK ANJAW NAJAX NAJBH NAJBJ NAJBK NAJCH NAJCH NAJCK	Internal Thread on Both Ends Standard Type	g6	45	S45C	Black Oxide Finish Electroless Nickel Plating
0Cr18Ni9			SUS304	—	
35CrMo			Hardness 28~33HRC	—	
45			S45C	Black Oxide Finish Electroless Nickel Plating	
0Cr18Ni9			SUS304	—	
45			S45C	Black Oxide Finish Electroless Nickel Plating	
		h7	45	S45C	Black Oxide Finish Electroless Nickel Plating
		h9	45	S45C	Black Oxide Finish Electroless Nickel Plating
			0Cr18Ni9	SUS304	—



g6

Model	Minimum Unit 0.1	M.N Selection	
		Code	Dg6
4	12.0~200.0	2	
5	12.0~250.0	2.6 3	
6	18.0~300.0	4	
8	18.0~400.0	4 5 6	
10	18.0~500.0	4 5 6	
12	25.0~600.0	5 6 8	
13		5 6 8	
15	25.0~700.0	5 6 8 10	
16	25.0~800.0	5 6 8 10	
17		5 6 8 10 12	
18	35.0~800.0	5 6 8 10 12	
20		5 6 8 10 12 16	
22		5 6 8 10 12 16	
25	45.0~800.0	5 6 8 10 12 16	
30	55.0~800.0	8 10 12 16 20	
35	65.0~800.0	8 10 12 16 20 24	
40	75.0~800.0	12 16 20 24 30	
50	95.0~800.0	16 20 24 30	

h7

Model	Minimum Unit 0.1	M.N Selection	
		Code	Dh7
4	12.0~200.0	2	
5	12.0~250.0	2.6 3	
6	18.0~300.0	3 4	
8	18.0~400.0	3 4 5 6	
10	18.0~500.0	4 5 6	
12	25.0~600.0	5 6 8	
15	25.0~700.0	5 6 8 10	
20	35.0~800.0	5 6 8 10 12 16	
25	45.0~800.0	5 6 8 10 12 16	
30	55.0~800.0	8 10 12 16 20	
35	65.0~800.0	8 10 12 16 20 24	
40	75.0~800.0	12 16 20 24 30	
50	95.0~800.0	16 20 24 30	

h9

Model	Minimum Unit 0.1	M.N Selection	
		Code	Dh9
4	12.0~200.0	2	
5	12.0~250.0	2.6 3	
6	18.0~300.0	3 4	
8	18.0~400.0	3 4 5 6	
10	18.0~500.0	4 5 6	
12	25.0~600.0	5 6 8	
15	25.0~700.0	5 6 8 10	
20	35.0~800.0	5 6 8 10 12 16	
25	45.0~800.0	5 6 8 10 12 16	
30	55.0~800.0	8 10 12 16 20	
35	65.0~800.0	8 10 12 16 20 24	
40	75.0~800.0	12 16 20 24 30	
50	95.0~800.0	16 20 24 30	

Optional Processing

Precision Grade	Change L size tolerance	Adding Flats	Add keyway	Addition of slots for cam opening																									
	Code	LC	LA()-LB()	KB()-KC()	KD()																								
Technical Specification	Selection Method LC □ L<400 Change to L±0.05 L≥400 Change to L±0.1	Selection Method LA10-G3 Selection Method LB10-J3-Y10-X3 □ Minimum Unit 1 □ When specifying G,J,X, it must be 50 or below <table border="1"> <tr><td>D</td><td>H</td></tr> <tr><td>3-5</td><td>0.5</td></tr> <tr><td>6-17</td><td>1</td></tr> <tr><td>18-40</td><td>2</td></tr> <tr><td>50</td><td>3</td></tr> </table>	D	H	3-5	0.5	6-17	1	18-40	2	50	3	Selection Method KB50-S10 Selection Method KC50-C8-K40-T10 □ Minimum Unit 1 □ When specifying S,T,C, it must be 100 or below □ If three keyways are required, please select both KB and KC. □ For keyway details, see the product brief of the rotating shaft.	Selection Method KD10 □ Minimum Unit 1 □ Applicable to the D specifications in the right table. <table border="1"> <tr><td>D</td><td>d</td><td>V2</td></tr> <tr><td>6</td><td>5</td><td>4</td></tr> <tr><td>8</td><td>7</td><td>4</td></tr> <tr><td>10</td><td>8</td><td>5</td></tr> <tr><td>12</td><td>10</td><td>5</td></tr> </table>	D	d	V2	6	5	4	8	7	4	10	8	5	12	10	5
D	H																												
3-5	0.5																												
6-17	1																												
18-40	2																												
50	3																												
D	d	V2																											
6	5	4																											
8	7	4																											
10	8	5																											
12	10	5																											